



Terrascope viewer for climate education

Inspire and engage



10 km





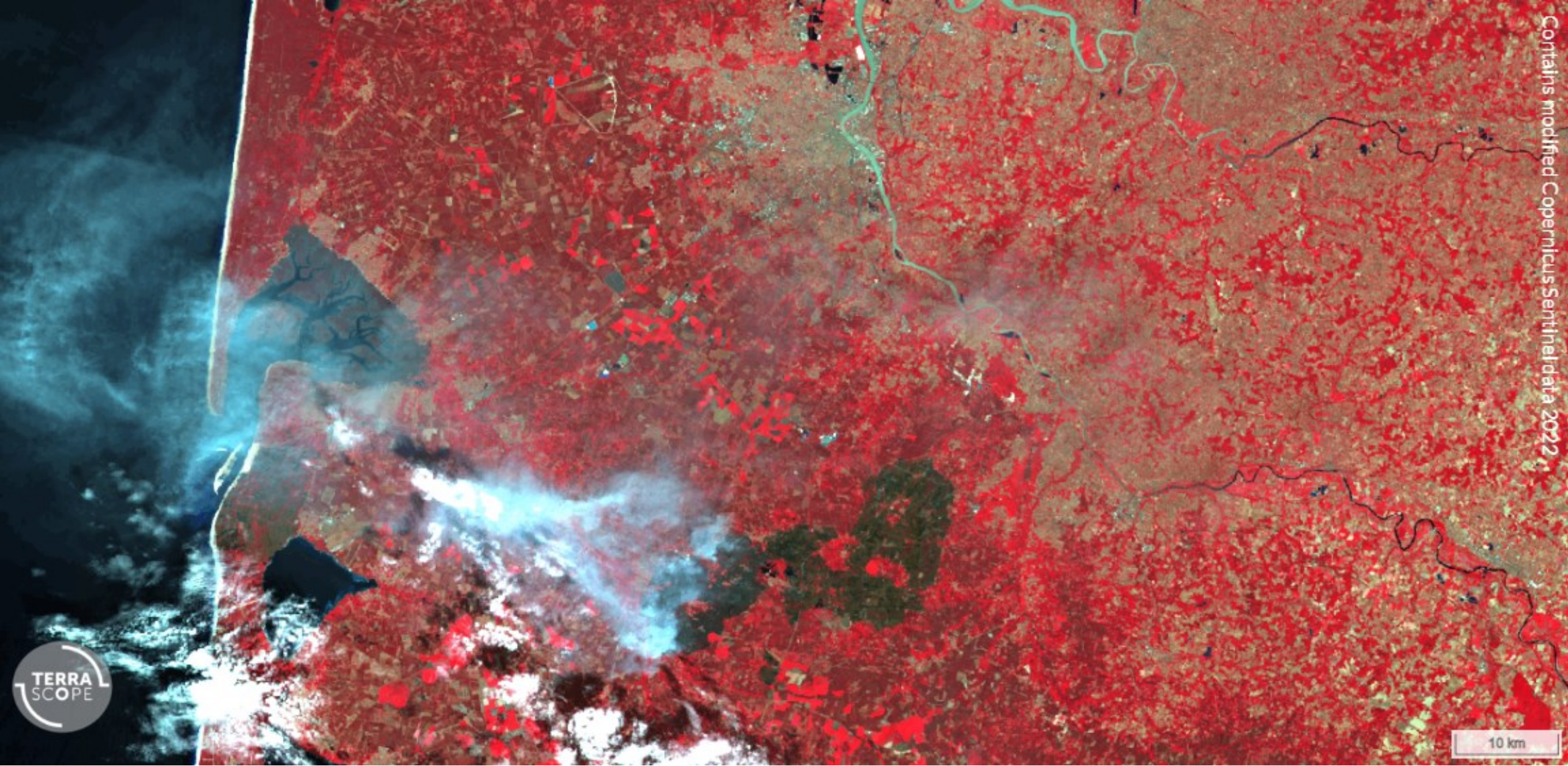
Copernicus Sentinel-2 Copernicus Sentinel-2 data 2022

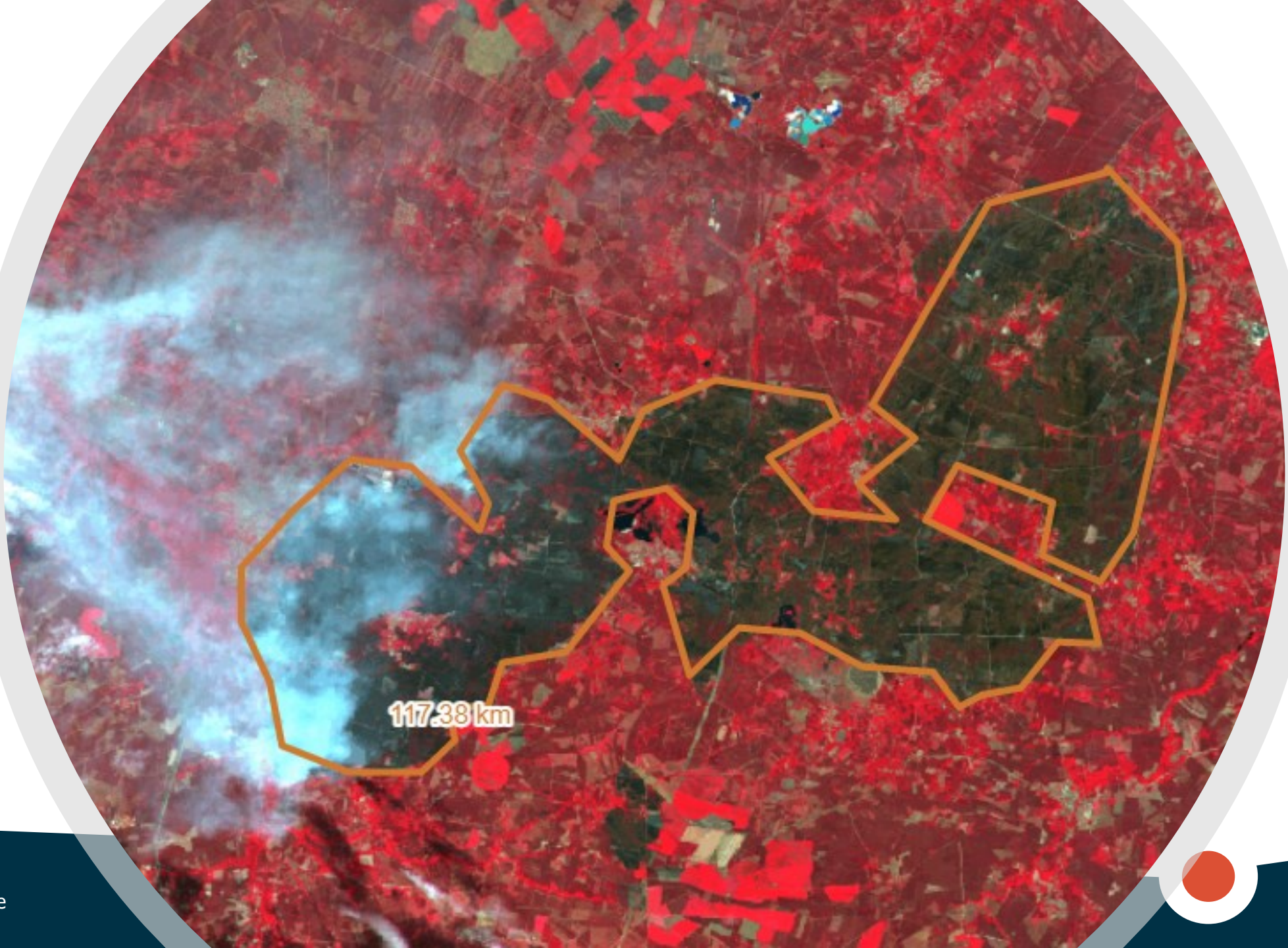


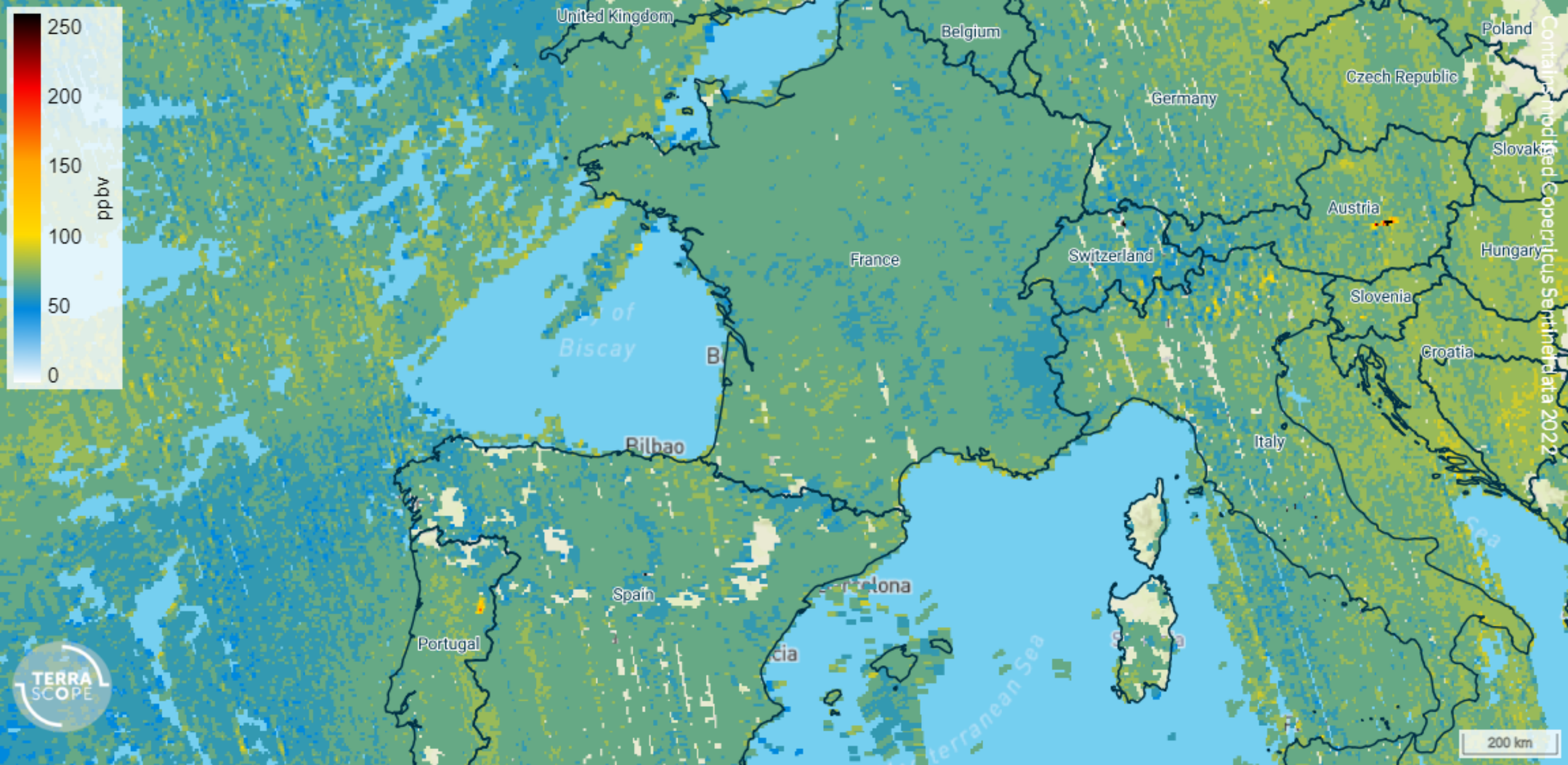


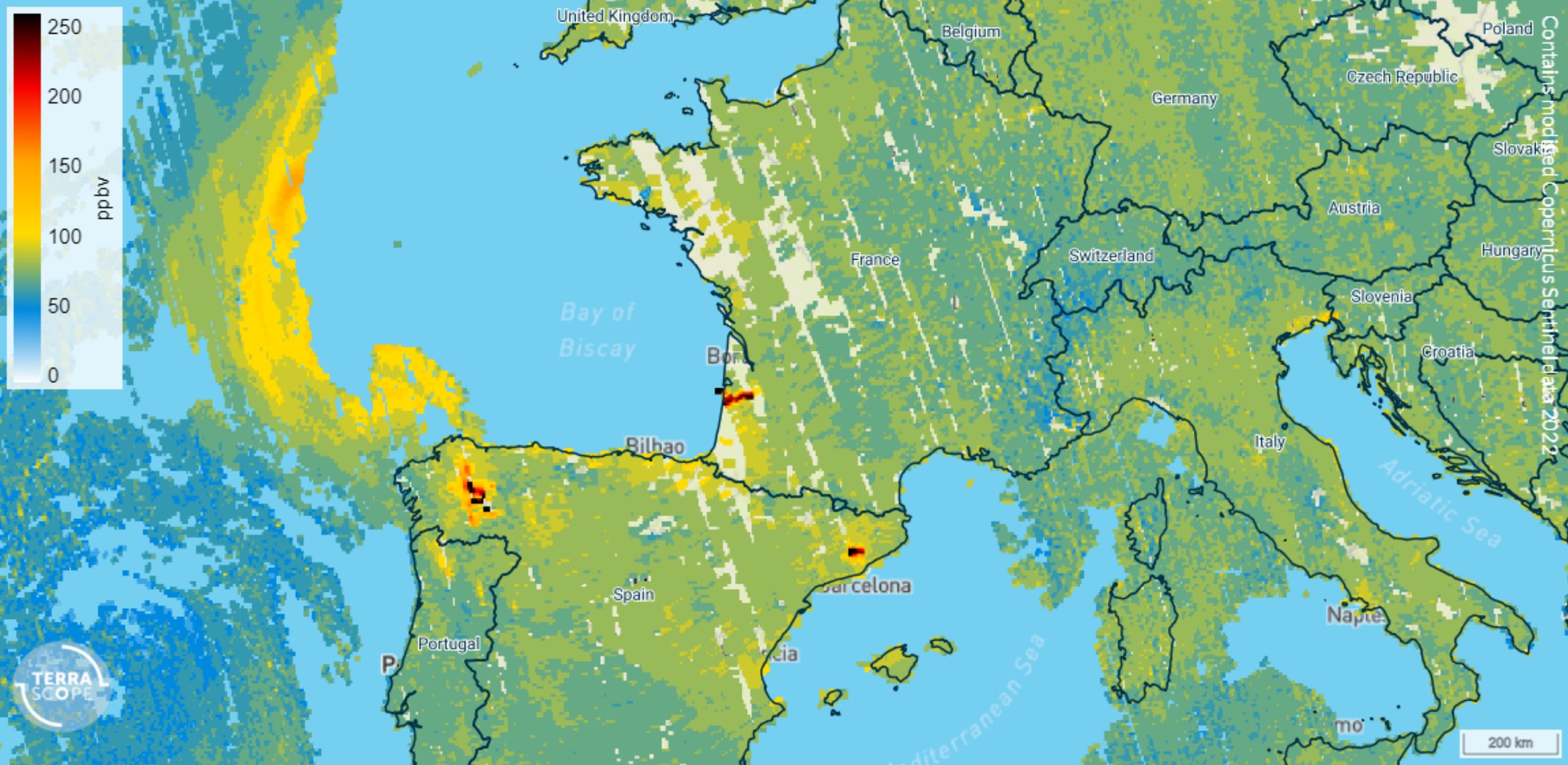


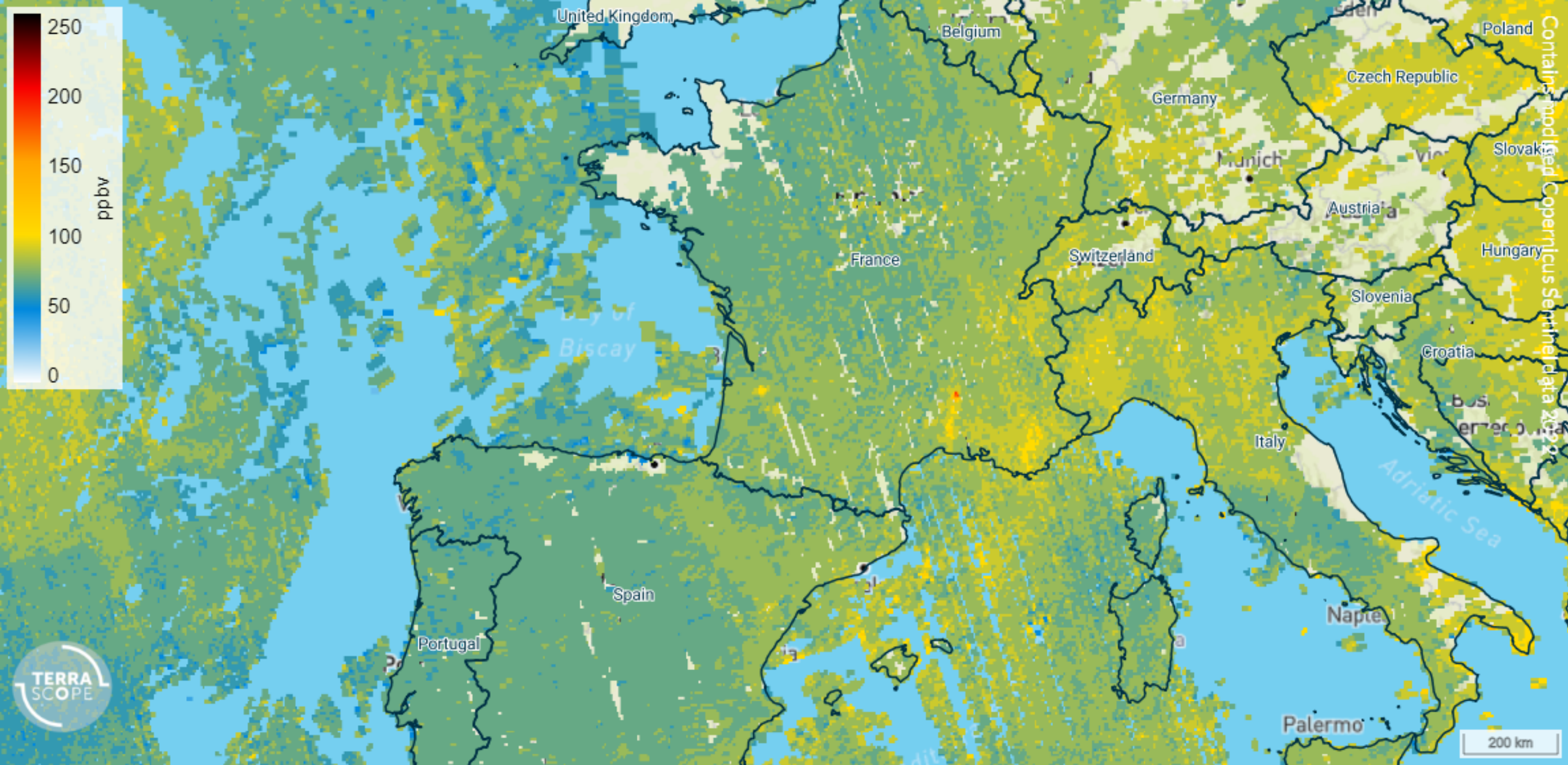


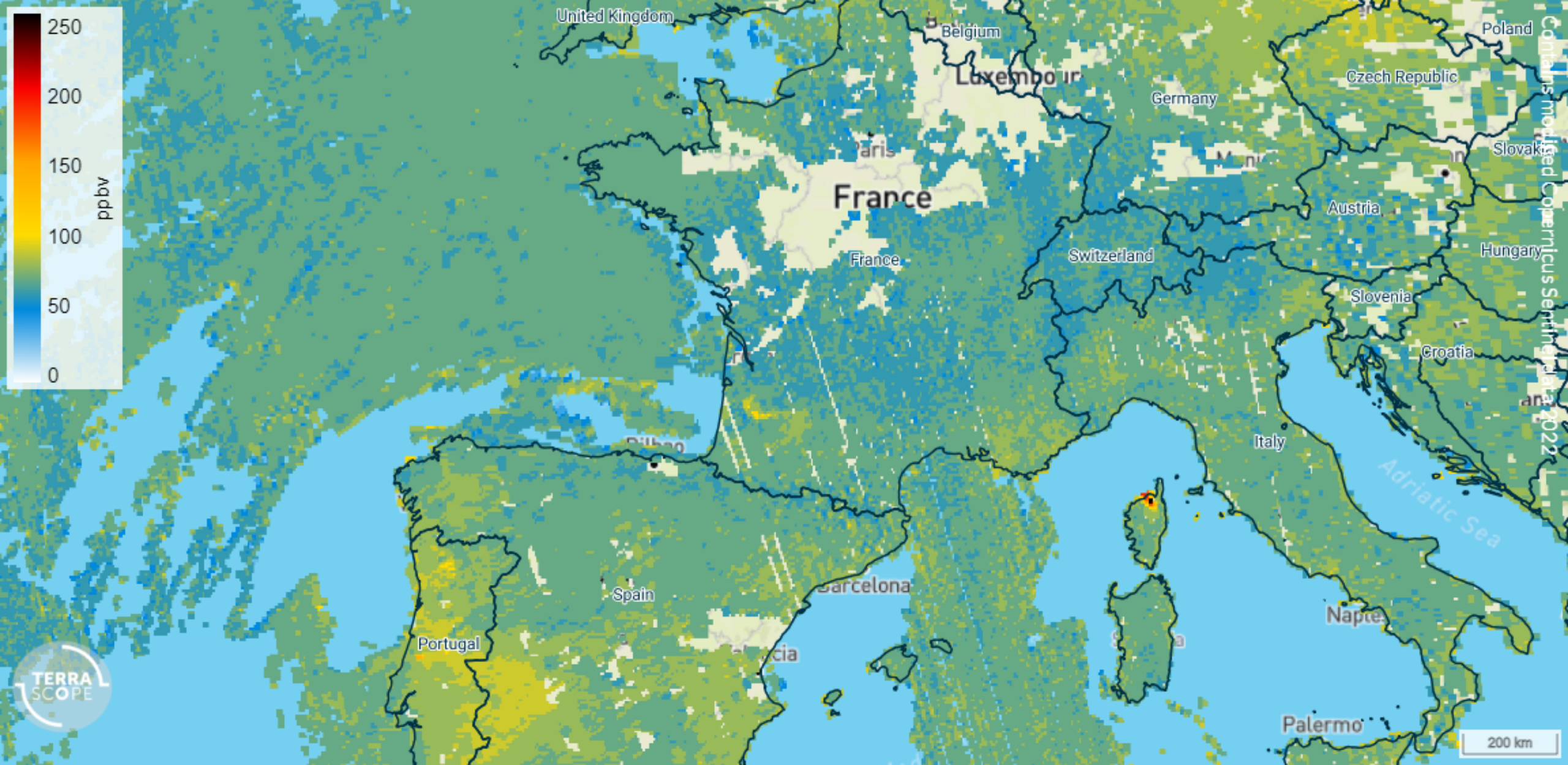


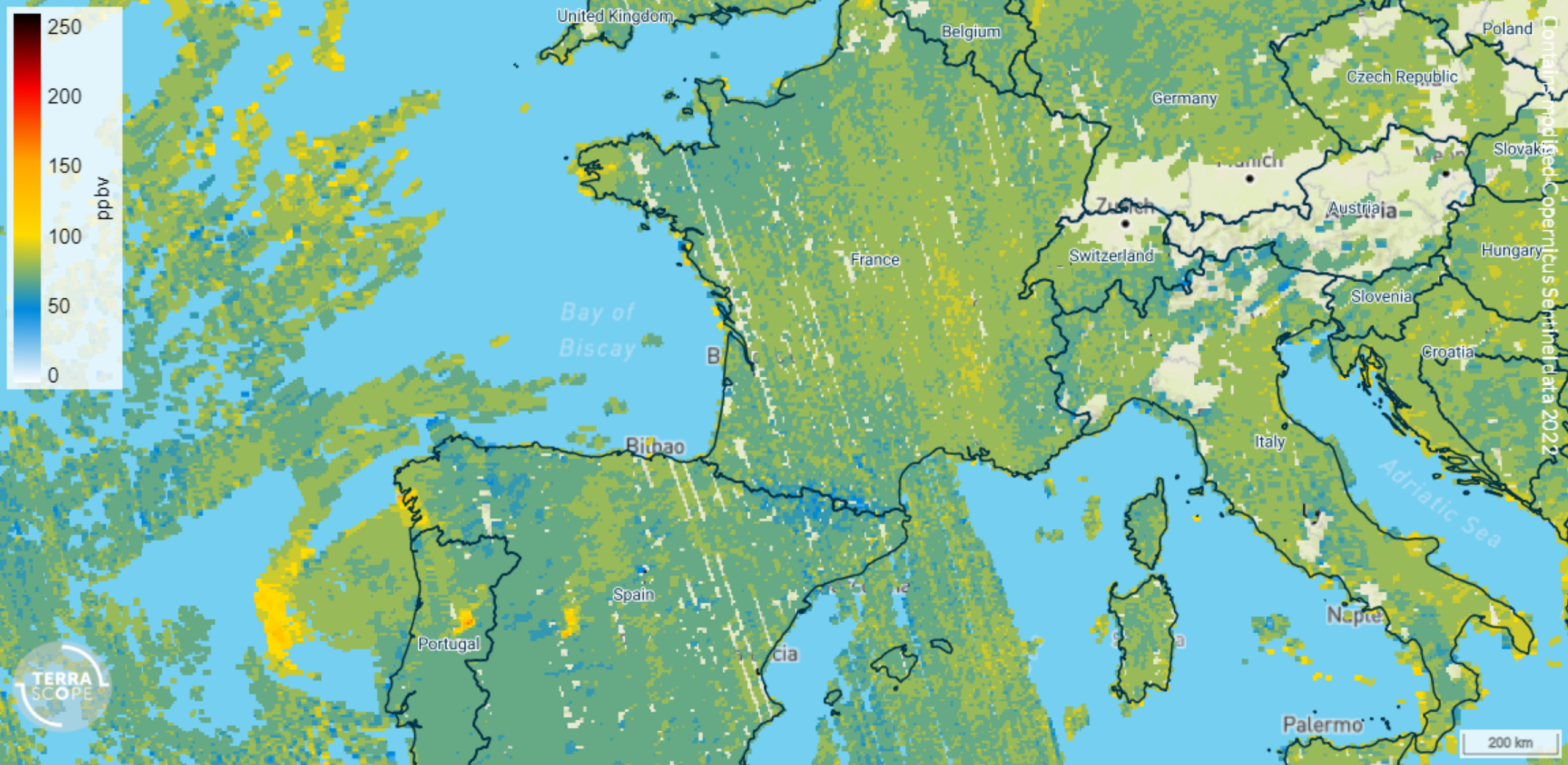


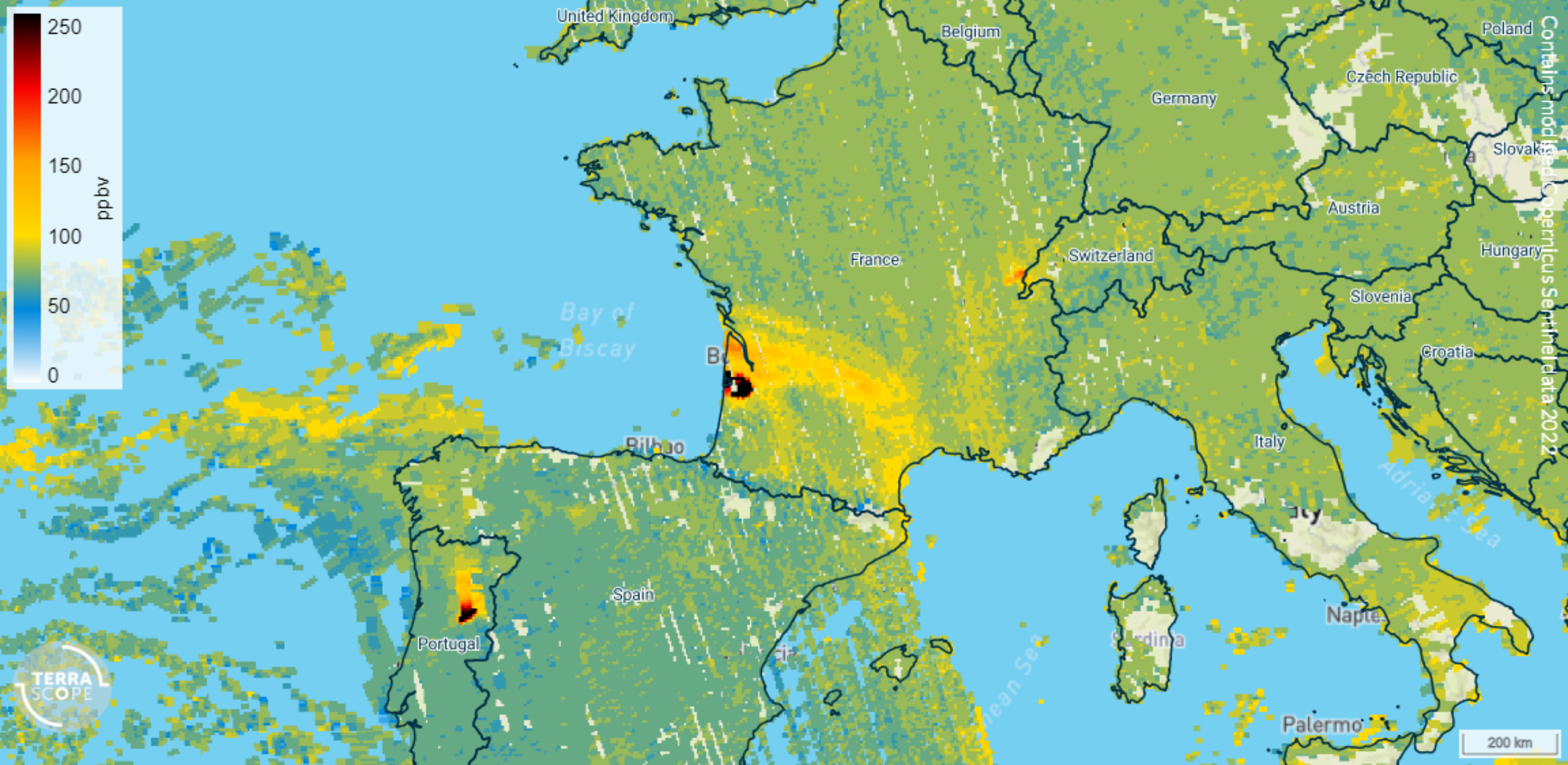


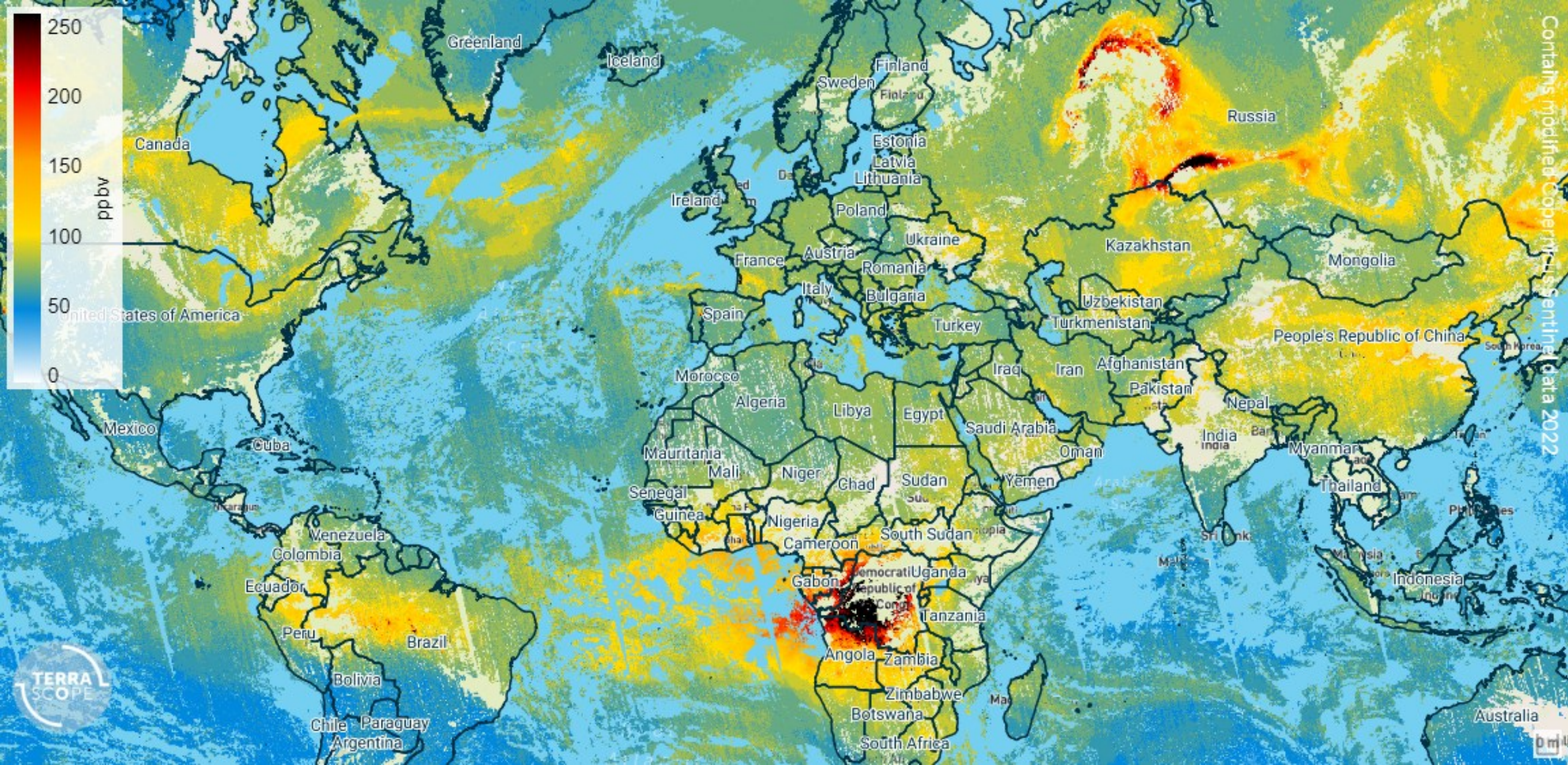












Contains MODIS Copernicus Sentinel data 2022





Join our webinars and learn more about several use cases

We are pleased to introduce to you a **new series of Terrascope webinars**. Experts in the field will **present and demonstrate several different use cases**, both research based and operational services, to show you how Earth observation data and services give us the possibility to achieve more.

Access massive amounts of data faster than ever before, **combine data and use the latest technology, retrieve clear and objective information for critical decisions or new policies, ...** The cases are diverse: monitoring water quality, measuring nitrogen dioxide, combining satellite data and artificial intelligence to detect changes, mapping flooded areas, ...

Join us for one or more webinars and discover the great **potential of Sentinel satellite data and how Terrascope can make your work easier**. In each webinar, we will discuss one single use case, based on these three questions:

- What was the question that needed an answer?
- How did Sentinel satellite data help in formulating the answer?
- What is the impact, now that the answer is provided?



The webinars are presented by the people directly involved in the



Layers

You are now looking at Sentinel 2 - color image

Search...

- Sentinel 1
- Sentinel 2
 - Sentinel 2 - color image**
Natural color image made from images in blue, green and red
 - Sentinel 2 - color infrared image
Color image made from images in green, red and infrared. Shows vegetation in red
 - Sentinel 2 - FAPAR
FAPAR shows the photosynthetic activity of green vegetation
 - Sentinel 2 - NDVI
NDVI describes the greenness of vegetation
 - Sentinel 2 - LAI
LAI show the amount of green leaf area per square meter ground surface
 - Sentinel 2 - FCOVER
FCOVER is the fraction of ground surface which is covered by vegetation



TERRASCOPE

WELCOME TO OUR TERRASCOPE

WEBINAR

*Getting started with
EO data and services*

- Starting at 16:05
- Please keep your microphones muted
- Technical issues? Please contact us via the chat
- Use the Q&A for questions related to Terrascope
- You can still register for our webinar 15-12

How to develop applications via our cloud & web services

<https://vimeo.com/489833682>





Thank You

Jurgen Everaerts

jurgen.everaerts@vito.be



@Terrascope_BE

www.terrascope.be